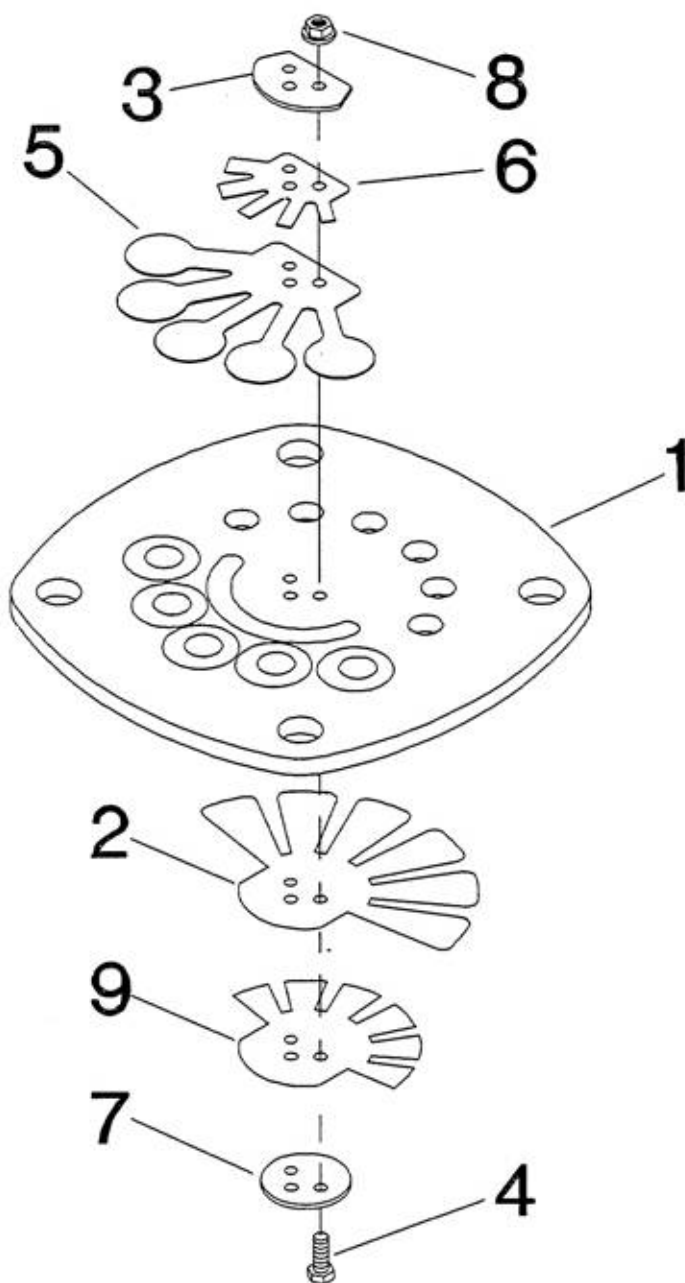


4. High Pressure Valve Plate Assembly - Model 2545



All manufacturer's names, numbers, photos, product description and/or part numbers are used for reference purposes only & it is not implied that any part listed is the product of these manufacturers. Since Approvement are made from time to time, the illustration and specifications are subject to change without notice.

4. High Pressure Valve Plate Assembly - Model 2545

REF. NO.	PART NO.	DESCRIPTION	QTY.	SPARES		
				1	2	3
REF.	32293904	ASSEMBLY, HIGH PRESSURE (2.75") VALVE PLATE	1			
4-1	32294266	PLATE, HIGH PRESSURE VALVE	1			
4-2	32294282	VALVE, HIGH PRESSURE INTAKE FINGER	1			
4-3	32294316	RETAINER, HIGH PRESSURE DISCHARGE VALVE	1			
4-4	97511042	SCREW, M3X16 HEX HEAD	3			
4-5	32294290	VALVE, HIGH PRESSURE DISCHARGE	1			
4-6	32294357	DAMPER, HIGH PRESSURE DISCHARGE VALVE	1			
4-7	32294308	RETAINER, HIGH PRESSURE INTAKE VALVE	1			
4-8	97511059	NUT, M3 HEX WITH LOCKWASHER	3			
4-9	32295826	DAMPER, VALVE	1			

All manufacturer's names, numbers, photos, product description and/or part numbers are used for reference purposes only & it is not implied that any part listed is the product of these manufacturers. Since Approvement are made from time to time, the illustration and specifications are subject to change without notice.